



High Current Power Inductors - SEP5030EX SERIES



PART NUMBERING SYSTEM

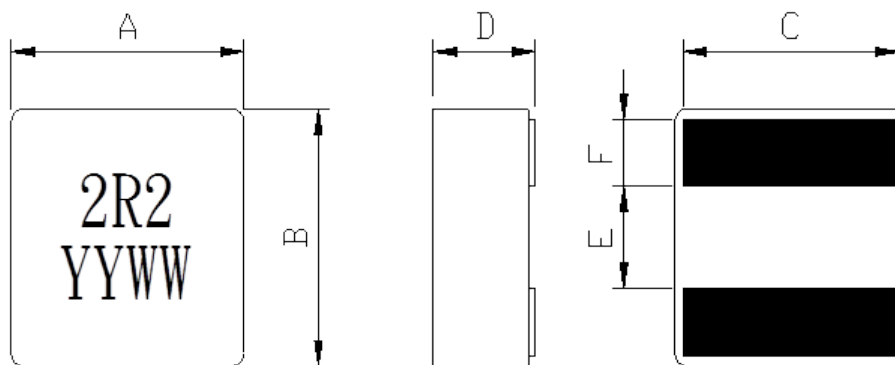
SEP	5030EX	—	R33M	—	LF
TYPE	DIMENSIONS		INDUCTANCE		LEAD FREE

FEATURES :

- Low profile (3.1mm max. height) and 6.2 mm max. square.
- Excellent current handling – up to 31 A; Exceptionally low DCR – only 2.10 mOhms
- Inductance rage: 0.15 μ H – 4.7 μ H
- Magnetically shielded and low DC resistance and Suitable for large current .
- Excellent temperature stability for inductance and saturation .

SHAPES AND DIMENSIONS :

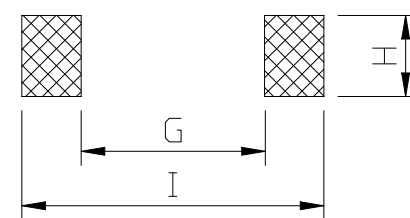
UNIT : mm



A=6.0 \pm 0.2 B=5.7 \pm 0.2 C=4.3 \pm 0.3 D=2.9 \pm 0.2 E=2.3 \pm 0.25 F= 1.1 \pm 0.2

RECOMMENDED PATTERNS

UNIT : mm



H=4.7 G= 2.0 I = 4.5



High Current Power Inductors - SEP5030EX SERIES



SPECIFICATION TABLE

PART NUMBER	INDUCTANCE (μH)	I _{sat} (A) Typ.(Max.)	I _{rms} (A)Typ. 20°C/40°C(Rise)	DCR (mΩ) (Typ.)	DCR (mΩ) (Max.)
SEP5030EX-R15M-LF	0.15±20%	36.0(32.5)	14.3(22.2)	2.10	2.31
SEP5030EX-R16M-LF	0.16±20%	35.0(32.0)	14.2(22.2)	2.12	2.33
SEP5030EX-R28M-LF	0.28±20%	32.0(28.0)	14.0(19.0)	3.00	3.30
SEP5030EX-R33M-LF	0.33±20%	28.0(26.0)	13.8(19.2)	3.20	3.52
SEP5030EX-R47M-LF	0.47±20%	26.0(24.0)	13.7(18.4)	3.75	4.13
SEP5030EX-R56M-LF	0.56±20%	22.0(20.2)	13.6(17.7)	4.05	4.52
SEP5030EX-R60M-LF	0.60±20%	22.0(20.0)	13.6(17.7)	4.11	4.52
SEP5030EX-R80M-LF	0.80±20%	20.0(18.0)	10.1(13.1)	5.14	5.65
SEP5030EX-R82M-LF	0.82±20%	19.7(17.6)	9.90(12.9)	5.25	5.78
SEP5030EX-1R0M-LF	1.00±20%	16.5(14.3)	9.00(12.2)	6.90	7.60
SEP5030EX-1R2M-LF	1.20±20%	15.0(13.5)	8.50(11.0)	8.80	9.70
SEP5030EX-1R5M-LF	1.50±20%	14.0(12.5)	8.00(10.5)	10.1	11.2
SEP5030EX-1R8M-LF	1.80±20%	12.3(11.3)	7.60(10.1)	11.5	12.7
SEP5030EX-2R2M-LF	2.20±20%	10.0(9.00)	7.20(9.70)	13.2	14.5
SEP5030EX-3R3M-LF	3.30±20%	9.50(8.70)	5.90(8.10)	21.0	23.1
SEP5030EX-4R7M-LF	4.70±20%	8.20(7.00)	4.30(5.90)	33.0	36.3

- I_{sat} : DC current at which the inductance drops 30% (typ) from its value without current.
- I_{rms} : Average current for a 40°C temperature rise above 25°C ambient.
- Test Frequency at 100KHz / 0.1V
- Operating temperature range -40°C to +125°C , Electrical specifications at 25°C.
- Reel Qty 2,000pcs